

# E-VERIFY® SOLUTION



## SIMPLE IMPLEMENTATION

Getting started with the HRWC E-Verify® Solution only requires an electronically signed Memorandum of Understanding (MOU).



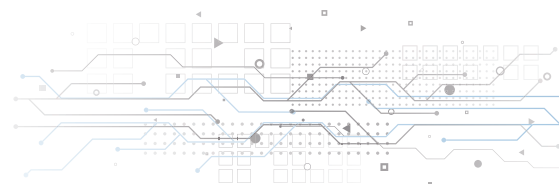
## COMPLIANT WORKFORCE

Running your workforce through the HRWC E-Verify® Solution gives your company the peace of mind that your employees are legally authorized to work in the United States. This helps to avoid fines and penalties that can be imposed by the USCIS.



## QUICK RESULTS

Once an employee is hired, the information entered into the Form I-9 is pushed to the HRWC system. This automatically creates a new E-Verify® case, and a result is typically given within a few seconds of the submission.



## WHAT IS E-VERIFY®?

E-Verify® is an electronic web-based system that allows employers to confirm the identity and work eligibility of an employee. It is available in all 50 states and the District of Columbia, as well as some of the U.S. territories.

During the on-boarding process, a Form I-9 is required to be completed by every employee. That information can be collected and compared with the records of the Department of Homeland Security (DHS), the Social Security Administration (SSA), and the Department of Motor Vehicles (DMV) in participating states. This is done by creating an E-Verify® case.

## WHY SHOULD I USE E-VERIFY®?

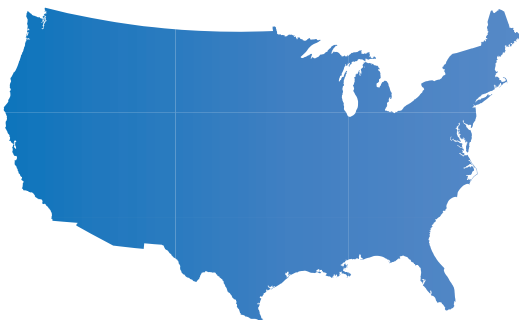
E-Verify® confirms that you have a legal, compliant workforce. It also helps deter document/identity fraud by presenting a "Photo Matching" status for certain forms of identification. Hiring managers may not be trained to spot fake documents, so this is an added layer of security. In certain states, E-Verify® also utilizes records found in the Department of Motor Vehicles database to verify the validity of an employee's driver's license.

## WHY SHOULD I USE HR WORK CYCLES?

Using the HR Work Cycles E-Verify® Solution with Tandem HR's portal will help you save time and reduce input errors, making the on-boarding process quicker and more efficient. If a stand-alone E-Verify® account is used, it will not be seamlessly integrated with the portal's Form I-9 feature. The information from the Form I-9 will have to be manually entered into the E-Verify® system by the hiring managers, leaving room for errors, missed information, and improperly closed cases.

The HRWC solution guides managers through the E-Verify® process and instructs them when additional steps are needed for particular case results. Empower your managers with the correct tools to protect your workforce with the combined solution from HR Work Cycles and Tandem HR.

**For more information on how to get started with the HRWC E-Verify® Solution, contact your Tandem HR Business Partner.**



# 850,000+

The number of enrolled MOUs for E-Verify® is currently over 850,000.

E-Verify® is a registered trademark of U.S. Department of Homeland Security.